

The background of the image is a close-up, artistic rendering of feathers in various shades of red, orange, and brown. The feathers are layered and have a soft, textured appearance. In the center, there is a white oval with a thin black border. Inside this oval, the title "SLEEP OVER IN A TREEHOUSE" is written in a black, stylized, gothic-style font. Below the title, the subtitle "The Sabi Sand (Lion Sand)" is written in a smaller, black, serif font, flanked by two horizontal lines.

SLEEP OVER IN A TREEHOUSE

— The Sabi Sand (Lion Sand) —

FALL ASLEEP TO THE SOUNDS OF THE AFRICAN NIGHT

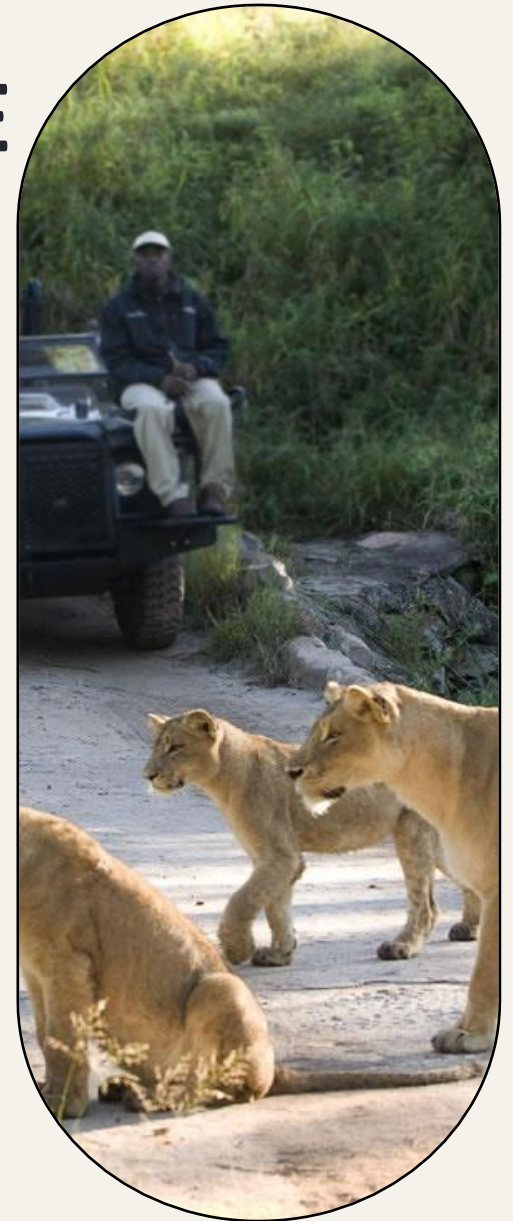
A treehouse wishing to get closer to the night sounds of Africa without sacrificing any of their creature comforts can do little better than a night in one of the treehouses at Lion Sands. Ideal for the hopeless romantic or for anyone who simply wishes to reconnect with the earth, the treehouses are securely constructed above the ground with glass walls that provide panoramic views of the bush, as well as a safe and luxurious vantage point from which to watch twilight slowly turn to night.

Awaken as the deep black velvet of the night slowly pales to grey and listen to the subtle sounds of the bush coming to life. Revel in the freedom of waking up as part of this magnificent bush setting. Savour a cup of coffee as a chorus of birds welcomes the coming of the light and you wait for your guide to come and fetch you in time for an early morning game drive. Armed with your knowledge of the night's sounds, set off to discover what light the day can cast on the drama that took place in the hush of the night before.



THERE ARE FEW SUCH EXPERIENCES LEFT ON EARTH THAT CAPTURE THE ROMANCE OF THE UNTAMED AND UNTAINTED

Pack an overnight bag and set off to experience the ultimate bush bedroom. You will be dropped off by a guide, who will leave you with a decadent picnic basket and an emergency radio that is monitored all night. Enclosed in your elegant glass suite, settle in to experience the magic of the night. Gaze on the shining beauty of the Milky Way and listen to the distance whoop of hyena on the prowl. Fall silent as you hear the alarm snort of the impala, followed by the rasping call of the leopard or the powerful call of a lion checking in with the rest of his pride. Listen to hippo honk as you climb beneath soft covers and fall asleep in your comfortable cocoon.





PACKAGES

_____ Prices are seasonal due to inflation, _____
please inquire.

River Lodge

RATE FROM
PER PERSON SHARING PER NIGHT

R 24 864.00 P.P

INCLUSIONS & EXCLUSIONS

RATES INCLUDE

LUXURIOUS ACCOMMODATION IN A LUXURY ROOM, SUPERIOR LUXURY ROOM OR RIVER SUITE (WITH PLUNGE POOL); ALL MEALS; TEAS/COFFEES; MINIBAR IN ROOM; INCLUSIVE DRINKS AND SELECTED SNACKS (ALL SOFT DRINKS, AND SELECTION OF BEERS, SPIRITS AND HOUSE WINES); TWO GAME DRIVES DAILY WITH FGASA-ACCREDITED FIELD GUIDE AND TRACKER; GAME DRIVE REFRESHMENTS AND SNACKS; SPECIFIED INCLUSIVE SAFARI ACTIVITIES; SKUKUZA AIRPORT TRANSFERS; WI-FI

SPECIALIST ACTIVITIES INCLUDED: GAME DRIVES; BUSH WALKS; STARGAZING; WILDLIFE LECTURES; BUSH BREAKFASTS, PICNIC LUNCHEAS AND BUSH DINNERS; MACK & MADI KIDS' ADVENTURE EXPLORERS EXPERIENCES.

RATES EXCLUDE

TREEHOUSE EXPERIENCES; PRIVATE OPEN SAFARI VEHICLE HIRE; HELICOPTER FLIGHTS; GOLFING; PARK AND CONSERVATION FEES; SUSTAINABILITY LEVY (R115 PER PERSON PER NIGHT); EXCLUSIVE USE BUSH BREAKFASTS & DINNERS



Narina Lodge

RATE FROM
PER PERSON SHARING PER NIGHT

R 28 188.00

INCLUSIONS & EXCLUSIONS

RATES INCLUDE

LUXURIOUS ACCOMMODATION IN A SUITE WITH PRIVATE LOUNGE AND PLUNGE POOL; ALL MEALS; TEAS/COFFEES; MINIBAR IN ROOM; INCLUSIVE DRINKS AND SELECTED SNACKS (ALL SOFT DRINKS, AND SELECTION OF BEERS, SPIRITS AND HOUSE WINES); TWO GAME DRIVES DAILY WITH FGASA-ACCREDITED FIELD GUIDE AND TRACKER; GAME DRIVE REFRESHMENTS AND SNACKS; SPECIFIED INCLUSIVE SAFARI ACTIVITIES; SKUKUZA AIRPORT TRANSFERS; WI-FI.

SPECIALIST ACTIVITIES INCLUDED: GAME DRIVES; BUSH WALKS; STARGAZING; WILDLIFE LECTURES; BUSH BREAKFASTS, PICNIC LUNCHEAS AND BUSH DINNERS; MACK & MADI KIDS' ADVENTURE EXPLORERS EXPERIENCES.

RATES EXCLUDE

LAUNDRY; PREMIUM BRAND BEERS, SPIRITS, CELLAR WINES AND CHAMPAGNES; CIGARS AND CIGARETTES; ALL FLIGHTS AND TRANSFERS (OTHER THAN SKUKUZA AIRPORT); GRATUITIES; TELEPHONE CALLS; MORE GALLERY PURCHASES; SPA TREATMENTS; SABI SAND AND KNP ENTRANCE FEES AND GUEST CONSERVATION CONTRIBUTION; SUSTAINABILITY LEVY (R115 PER PERSON PER NIGHT). ANY EXTRAS WILL BE FOR THE GUESTS' ACCOUNT PAYABLE ON DEPARTURE.

SPECIALIST ACTIVITIES EXCLUDED: TREEHOUSE EXPERIENCES; PRIVATE OPEN SAFARI VEHICLE HIRE; LOCAL COMMUNITY EXPERIENCES (WITH MORE COMMUNITY FOUNDATION); HELICOPTER FLIGHTS; GOLF; EXCLUSIVE BUSH BREAKFASTS AND DINNERS



Tinga Lodge

RATE FROM
PER PERSON SHARING PER NIGHT

R 28 188.00

INCLUSIONS & EXCLUSIONS

RATES INCLUDE

LUXURIOUS ACCOMMODATION IN A SUITE WITH PRIVATE LOUNGE AND PLUNGE POOL; ALL MEALS; TEAS/COFFEES; MINIBAR IN ROOM; INCLUSIVE DRINKS AND SELECTED SNACKS (ALL SOFT DRINKS, AND SELECTION OF BEERS, SPIRITS AND HOUSE WINES); TWO GAME DRIVES DAILY WITH FGASA-ACCREDITED FIELD GUIDE AND TRACKER; GAME DRIVE REFRESHMENTS AND SNACKS; SPECIFIED INCLUSIVE SAFARI ACTIVITIES; SKUKUZA AIRPORT TRANSFERS; WI-FI.

SPECIALIST ACTIVITIES INCLUDED: GAME DRIVES; BUSH WALKS; STARGAZING; WILDLIFE LECTURES; BUSH BREAKFASTS, PICNIC LUNCHEAS AND BUSH DINNERS; MACK & MADI KIDS' ADVENTURE EXPLORERS EXPERIENCES.

RATES EXCLUDE

LAUNDRY; PREMIUM BRAND BEERS, SPIRITS, CELLAR WINES AND CHAMPAGNES; CIGARS AND CIGARETTES; ALL FLIGHTS AND TRANSFERS (OTHER THAN SKUKUZA AIRPORT); GRATUITIES; TELEPHONE CALLS; MORE GALLERY PURCHASES; SPA TREATMENTS; SABI SAND AND KNP ENTRANCE FEES AND GUEST CONSERVATION CONTRIBUTION; SUSTAINABILITY LEVY (R115 PER PERSON PER NIGHT). ANY EXTRAS WILL BE FOR THE GUESTS' ACCOUNT PAYABLE ON DEPARTURE.

SPECIALIST ACTIVITIES EXCLUDED: TREEHOUSE EXPERIENCES; PRIVATE OPEN SAFARI VEHICLE HIRE; LOCAL COMMUNITY EXPERIENCES (WITH MORE COMMUNITY FOUNDATION); HELICOPTER FLIGHTS; GOLF; EXCLUSIVE BUSH BREAKFASTS AND DINNERS.



Ivory Lodge

RATE FROM
PER PERSON SHARING PER NIGHT

R 46 800.00

INCLUSIONS & EXCLUSIONS

RATES INCLUDE

ULTRA-LUXURIOUS ACCOMMODATION IN A SUITE, WITH PRIVATE LOUNGE AND PLUNGE POOL; ALL MEALS; TEAS/COFFEES; MAXI-BAR IN ROOM; SELECTION OF PREMIUM BRAND BEERS, SPIRITS, CELLAR WINES AND CHAMPAGNES; LAUNDRY; TWO GAME DRIVES DAILY WITH FGASA-ACCREDITED FIELD GUIDE AND TRACKER; GAME DRIVE REFRESHMENTS AND SNACKS; SPECIFIED INCLUSIVE SAFARI ACTIVITIES; SKUKUZA AIRPORT TRANSFERS; WI-FI.

SPECIALIST ACTIVITIES INCLUDED: GAME DRIVES; BUSH WALKS; STARGAZING; WILDLIFE LECTURES; BUSH BREAKFASTS, PICNIC LUNCHEAS AND BUSH DINNERS; MACK & MADI KIDS' ADVENTURE EXPLORERS EXPERIENCES.

RATES EXCLUDE

CIGARS AND CIGARETTES; ALL FLIGHTS AND TRANSFERS (OTHER THAN SKUKUZA AIRPORT TRANSFER); GRATUITIES; TELEPHONE CALLS; MORE GALLERY PURCHASES; SPA TREATMENTS; SABI SAND ENTRANCE FEE AND GUEST CONSERVATION CONTRIBUTION; SUSTAINABILITY LEVY (R115 PER PERSON PER NIGHT); ANY EXTRAS WILL BE FOR THE GUESTS ACCOUNT

SPECIALIST ACTIVITIES EXCLUDED: TREEHOUSE EXPERIENCES; PRIVATE OPEN SAFARI VEHICLE HIRE; LOCAL COMMUNITY EXPERIENCES (WITH MORE COMMUNITY FOUNDATION); HELICOPTER FLIGHTS; GOLF; EXCLUSIVE BUSH BREAKFASTS AND DINNERS



Hinkwenu Residence

RATE FROM
FROM R 130 242 PER NIGHT

R 130 242.00
INCLUSIONS & EXCLUSIONS
RATES INCLUDE

UNSHARED, LUXURIOUS ACCOMMODATION, RATES INCLUDE MAXIMUM 4 ADULTS AND 2 CHILDREN; ALL MEALS; TEAS/COFFEES; MINIBAR IN ROOM; INCLUSIVE DRINKS AND SELECTED SNACKS (ALL SOFT DRINKS, AND A SELECTION OF BEERS, SPIRITS AND HOUSE WINES); TWO GAME DRIVES DAILY WITH FGASA-ACCREDITED FIELD GUIDE AND TRACKER; GAME DRIVE REFRESHMENTS AND SNACKS; SPECIFIED INCLUSIVE SAFARI ACTIVITIES; SKUKUZA AIRPORT TRANSFERS; WI-FI; PRIVATE OPEN SAFARI VEHICLE, PERSONAL FIELD GUIDE AND TRACKER; SWIMMING POOL

SPECIALIST ACTIVITIES INCLUDED:

GAME DRIVES
BUSH WALKS
STARGAZING
WILDLIFE LECTURES
BUSH BREAKFASTS, PICNIC LUNCHEAS AND BUSH DINNERS
MACK & MADI KIDS' ADVENTURE EXPLORERS EXPERIENCES

RATES EXCLUDE

LAUNDRY; PREMIUM BRAND BEERS, SPIRITS, CELLAR WINES AND CHAMPAGNES; CIGARS AND CIGARETTES; ALL FLIGHTS AND TRANSFERS NOT SPECIFIED; GRATUITIES; TELEPHONE CALLS; MORE GALLERY PURCHASES; SPA TREATMENTS; SABI SAND GAME RESERVE AND KRUGER NATIONAL PARK ENTRANCE FEES AND GUEST CONSERVATION CONTRIBUTIONS; R115 PER PERSON PER DAY RECOVERY AND REBUILDING LEVY; ANY EXTRAS WILL BE FOR THE GUESTS' ACCOUNTS
SPECIALIST ACTIVITIES EXCLUDED: TREEHOUSE EXPERIENCES; LOCAL COMMUNITY EXPERIENCES (WITH MORE COMMUNITY FOUNDATION); HELICOPTER FLIGHTS; GOLF; EXCLUSIVE BUSH BREAKFASTS AND DINNERS



Fish Eagle Residence

RATE FROM
FROM R 219 792.00 PER NIGHT

R 219 792.00

INCLUSIONS & EXCLUSIONS

RATES INCLUDE

UNSHARED, ULTRA-LUXURIOUS ACCOMMODATION IN A VILLA, RATES ARE BASED ON 4 PEOPLE SHARING WITH PRIVATE LOUNGE AND PLUNGE POOL; ALL MEALS; TEAS/COFFEES; MAXIBAR IN ROOM; A SELECTION OF PREMIUM BRAND BEERS, SPIRITS, CELLAR WINES AND CHAMPAGNES; LAUNDRY; TWO GAME DRIVES DAILY WITH FGASA-ACCREDITED FIELD GUIDE AND TRACKER; GAME DRIVE REFRESHMENTS AND SNACKS; SPECIFIED INCLUSIVE SAFARI ACTIVITIES; SKUKUZA AIRPORT TRANSFERS; WI-FI, PRIVATE OPEN SAFARI VEHICLE, PERSONAL FIELD GUIDE AND TRACKER; PERSONAL CHEF AND BUTLER; SWIMMING POOL; GYM/SPA TREATMENT ROOM; FIRE-PIT DECK

SPECIALIST ACTIVITIES INCLUDED: GAME DRIVES; BUSH WALKS; STARGAZING; WILDLIFE LECTURES; BUSH BREAKFASTS, PICNIC LUNCHEAS AND BUSH DINNERS; MACK & MADI KIDS' ADVENTURE EXPLORERS EXPERIENCES.

RATES EXCLUDE

CIGARS AND CIGARETTES; ALL FLIGHTS AND TRANSFERS NOT SPECIFIED; GRATUITIES; TELEPHONE CALLS; MORE GALLERY PURCHASES; SPA TREATMENTS; SABI SAND GAME RESERVE ENTRANCE FEE AND GUEST CONSERVATION CONTRIBUTION; R115 PER PERSON PER NIGHT SUSTAINABILITY LEVY; ANY EXTRAS WILL BE FOR THE GUESTS' ACCOUNTS.

SPECIALIST ACTIVITIES EXCLUDED: TREEHOUSE EXPERIENCES; PRIVATE OPEN SAFARI VEHICLE HIRE; LOCAL COMMUNITY EXPERIENCES (WITH MORE COMMUNITY FOUNDATION); HELICOPTER FLIGHTS; GOLF; EXCLUSIVE BUSH BREAKFASTS AND DINNERS.



EXPLORE OUR TREEHOUSES

ABOUT THE TREEHOUSE

Our Treehouses offer sprawling views of remote Africa, globed by even bigger star-lit skies. Below, the stillness is punctuated by animals' whistles, huffs, and growls. It all began with Chalkley Treehouse, built on the site where our ancestor Guy Aubrey Chalkley once set up camp in a leadwood tree. Since then, the experience has become more luxurious, with Kingston and Tinyeleti added to the collection.

TREEHOUSE LIST

- Chalkley Treehouse
- Kingston Treehouse
- Tinyeleti Treehouse



HOW IT WORKS

PLEASE INQUIRE FOR PRICES. DUE TO INFLATION PRICES WILL DIFFER
THE COST IS ZAR 5130.00 PER PERSON PER NIGHT.



HOW TO BOOK

- The treehouse experience is booked in conjunction to accommodation at the lodge of your choice .
- **The cost is ZAR 5130.00 per person per night.**
- Your room remains ready for your return at any point.
- You will pack a stay-over bag with essentials, leaving all your belongings safe back at the lodge

THE WILDLIFE

- As you look out over the bush from your treehouse hideout, the animals go about their own business undisturbed by your presence. Birds flit by and you can spot anything from an antelope to a leopard wandering past.
- As night falls, the sounds of the wild carry through the cool air and you will fall asleep to an African lullaby of chirps, distant growls, and the rustle of the breeze through the leaves

THE STARS

- The animals aren't the only things you will spot out here, through the dark night and crisp, clear air, stars by the million appear.
- From your Treehouse in the remote African wilderness, you will be able to see across the heavens, not visible with the naked eye.
- To help identify the constellations, planets, and even odd passing satellites, we will help you load a stargazing app to your smartphone.



DINING OUT

- A night out in Africa calls for al fresco dining, lit by lanterns and star.
- In your Treehouse, you will find a basket packed with a gourmet, tapas-style picnic and a cooler box of chilled drinks, Celebrating a particularly special occasion? Ask about our Champagnes.
- Sit down for dinner on your blanket or table on the deck, as the setting sun over the plains and sounds of the evening create an idyllic ambiance.



SAFETY FIRST

- Rest assured, our Treehouse have been securely constructed above the ground, where the animals remain at a safe and comfortable distance.
- Your field guide will drive you to your Treehouse and provide a full orientation, before departing.
- However, they will stay on call via two-way radio, should you need assistance, until the following day when you are collected after sunrise and your morning coffee.

CHALKLEY TREEHOUSE

This completely private treehouse, built around a majestic 500 year-old Leadwood Tree, was erected at the original site where Lion Sands founding father, Guy Aubrey Chalkley, climbed into the trees and set up camp to escape from predators roaming the plains below. The Lion Sands Chalkley Treehouse is a 10 minute drive from Lion Sands Ivory Lodge and Lion Sands River Lodge, and is completely secluded and private. The Field ranger does not accompany the guests at the Treehouse, as it is designed to be a totally secluded and offers guests a uniquely private safari experience under the stars. Once guests are dropped off at the Treehouse, they can expect to be completely alone with only the majestic sounds of the wild and the distant Sabie River filling the night air



KINGSTON TREEHOUSE

Make your way through rows of imposing white boulders and across a small drawbridge, and you will find the South African bush unfolding in front of you. Set amidst the pure and untouched wilderness, you will be surrounded by African bush and uninhibited wildlife at its very best. The Kingston treehouse is equipped with full bathroom and shower facilities, and Africology products to complete your sensory experience.

The Kingston treehouse in Sabi Sands is an experience for your Bucket List. But we must warn you once will never be enough.



TINYELETI TREEHOUSE

The Tinyeleti Treehouse in Sabi Sands, which translates to ‘Many Stars’, is an overnight wilderness experience that has no equal. Watch the sun set beyond the horizon as you sip on a cocktail or a glass of bubbly. You will be utterly riveted by the many animals that arrive at the river to quench their thirst. Tinyeleti is a tale you will tell over and over again. That is, if you can find the words to describe it.

The 50 square metres deck can accommodate four guests, based on two adults and two children under the age of 15.



GETTING TO THE TREEHOUSES

A treehouse stay can only be booked when staying at one of the Lion Sands lodges. Your ranger will take you to the treehouse at sunset.

INCLUDED IN YOUR STAY

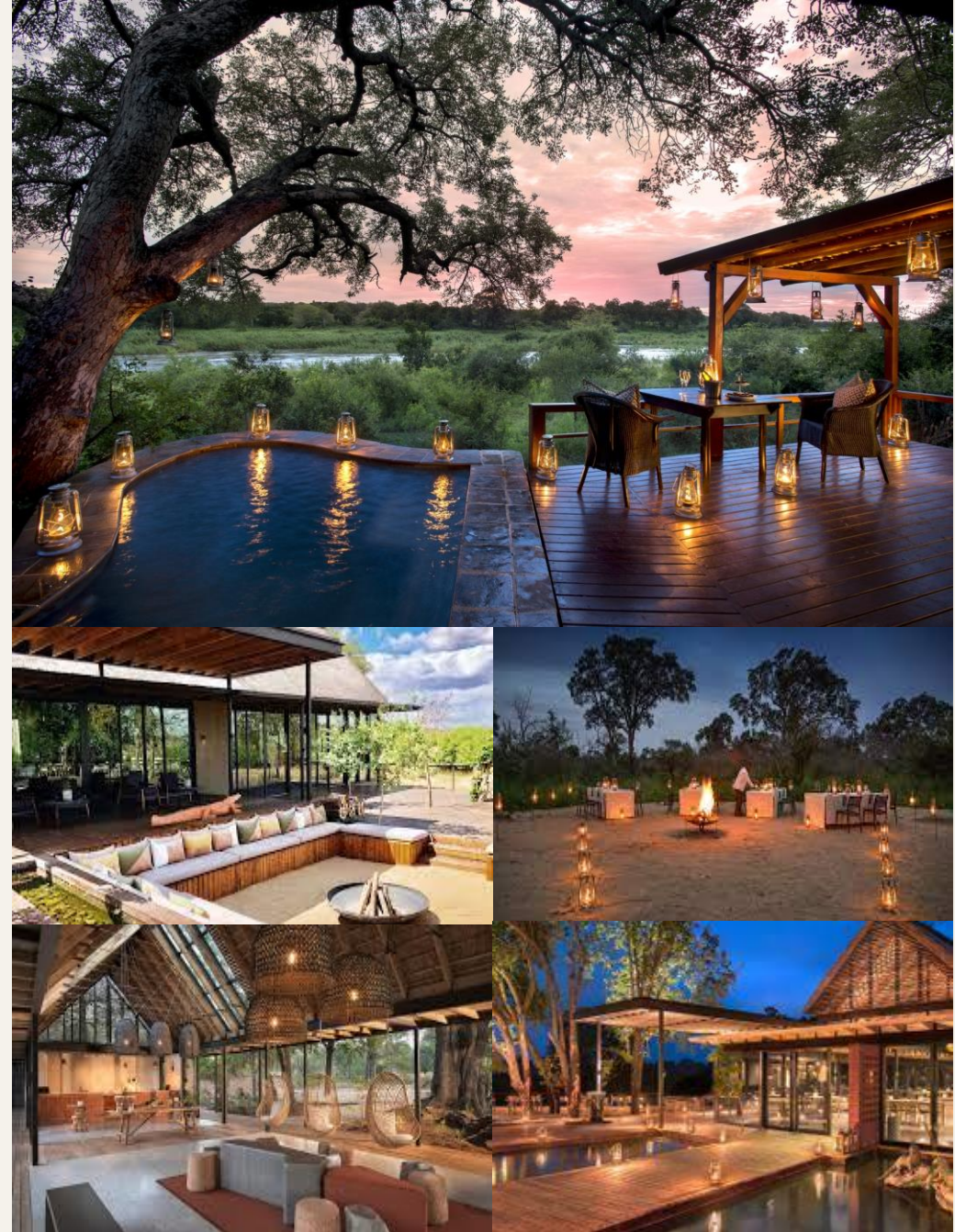
Picnic dinner/Tea & coffee
Soft drinks, local brand beers and spirits & house wines/Transfers to and from the lodge

EXCLUDED IN YOUR STAY

Premium drinks:
French champagne, cellar/wines and premier/brands/Laundry/Telephone calls/Curio shop purchases/Spa treatments
/Gratuities/Personal expenses

CHILDREN POLICY

Children are only allowed at the Tinyeleti Treehouse and Kingston Treehouse (2 adults and 2 children, 10 to 14 years).







Big Sky Travel & Tours

info@bigskytravel.co.za

+27 13 750 0329

www.bigskytravel.co.za

THANK

YOU